

Hampton Safari Mk2 Bluebell 2 double berths

£18,900

LOA 25' 6" Beam 9' 6" Draft 2' 0" Air draft 6' 5" BS Cert to 23/04/25

General

Bluebell is a well cared for Safari with a sliding saloon roof. She has an unusual three cabin layout and largely retains the original interior with very generous storage space. There is carpet, head linings and generously cut curtains throughout. The engine is a BMC 1.5 36hp diesel. The water, diesel and holding tanks are large.

Accommodation

Entry is via the stern into the aft cabin which has a double berth, 4 drawers and a short hanging space. A door leads to the galley with cooker, fridge and two cupboards topped by a stainless steel sink and a work surface. To starboard is a full length hanging wardrobe and a shallow wall cupboard.

Off the galley a sliding door leads to the toilet/shower compartment which has a hand basin over a large cupboard, a shower and a toilet with electric flush mounted on the holding tank - this minimises water usage, maximises pump out intervals and avoids the problems of the usual toilet pumps.

Forward of the galley a door leads to the saloon with an L shaped settee which converts to a double berth. A table pulls out from the dash. The wheel and engine controls are to port, the helm seat is freestanding, height adjustable and rotates. The large forepeak is easily accessible. There is some clouding on the forward windows.

General equipment

Solar panel with dual controller for daily battery charging and keeping the three batteries charged over winter. 350W inverter giving power for a shaver socket and a TV using the fitted aerial. Shore power cable connecting to a circuit breaker box and a 13A socket. Two 13kg Calor propane cylinders.

Well insulated calorifier providing warm or hot water depending how long the engine has been running.

Deck equipment

Stainless steel grab rails and pulpit so there is no exterior varnish to maintain.

Mirrors to give views of overtaking boats and side views for mooring. Solar panel. TV aerial.

16 fenders, 5 on board mooring ropes, 3 on shore ropes. 4 rhond anchors. Aft well cover.

Two mud weights with rope. Manual winch to ease the handling of mud weights.

Life ring and support bracket. Hook on flexible boarding ladder. Ensign flag with a short mast

Maintenance and additions

2017 Hull and superstructure painted. Carpeted throughout. New fore & aft cabin headlinings
New Neptune 4500 gas cooker and Dometic 12V electric fridge. Side windows refurbished.

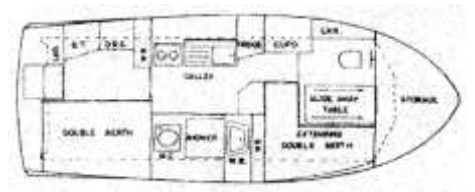
2019 New aft well cover

2021 Two speed Truma warm air heater with electronic control installed. 2 new fire extinguishers
New engine starter/solenoid. New ball type raw water inlet valves

2022 New twin alternators. New engine rpm gauge. Engine serviced in October

2023 New freshwater pump. New water filter cartridge New bilge pump float switch
New galley ceiling panel. New galley LED strip light.

Colin & Annette Gray 01480 463862 07474 755434 colin-gray@tiscali.co.uk



For older pictures Google hampton safari mk2 bluebell and pick the NYA photograph

